

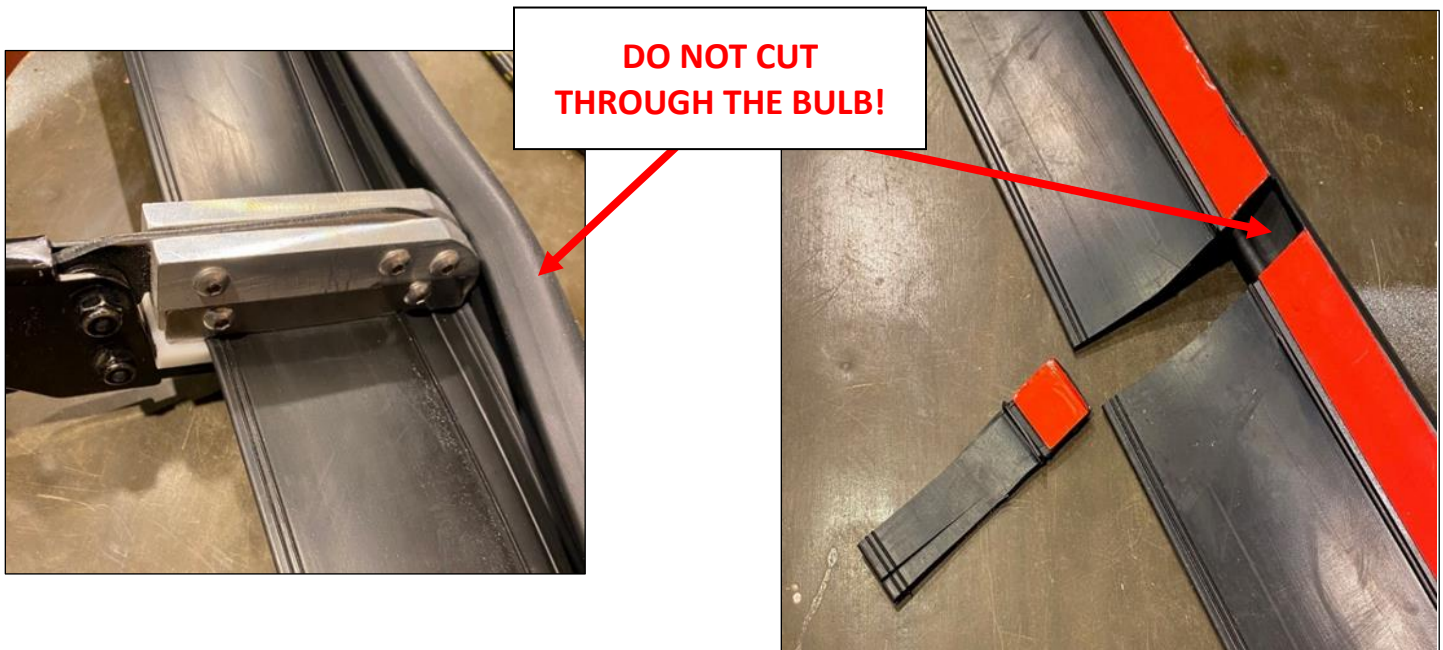
**ALL-IN-ONE WIPE SEAL SYSTEM
INSTALLATION INSTRUCTIONS
I11719T-2.0, I11719T-2.5, I11719T-3.0**



STEP 1

Using the cutting tool provided by Trim-Lok (or trim shears), cut a 3/4" notch through the flap seal and the base (rigid taped section) to separate the flap seal into a first section and a second section.

This will allow the second section of the flap seal to make a 90 degree turn relative to the first section of the flap seal and fit properly in the opening.



STEP 2

Install the first section vertically along the vertical wall of a slide out opening starting at the top of the chosen side of the slide out opening, lining up the flap seal evenly with the sidewall header. Peel the tape liner on the backside of the base material one to two feet at a time to prevent contamination of the tape.

Use the stop (raised edge on the base/flap seal) as a guide and stick the material to the wall, removing the tape liner as you go.

Once this section is stuck to the wall, staple or screw the rigid section to the wall every 10-12 inches. It may be desirable to leave a few inches of extra material beyond the bottom of the opening to be trimmed to fit following installation.



**ALL-IN-ONE WIPE SEAL SYSTEM
INSTALLATION INSTRUCTIONS
I11719T-2.0, I11719T-2.5, I11719T-3.0**



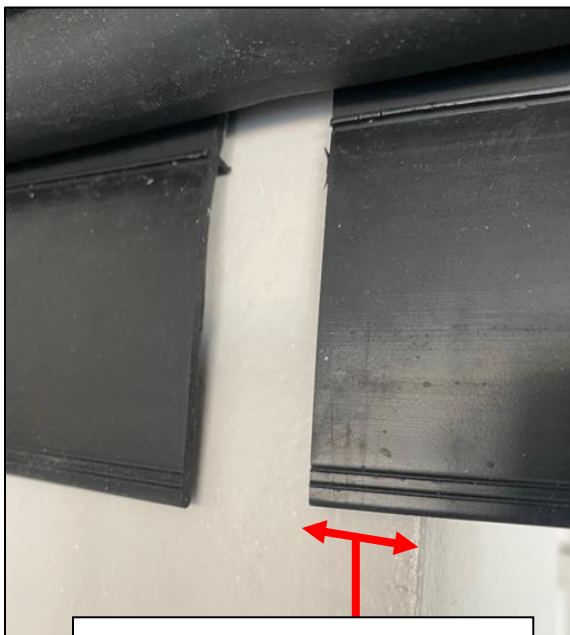
STEP 3

Rotate the second section horizontally (90 degrees) to position the material at the corner so that the horizontal flap seal overlays 1/2" beyond the room opening. Slide the horizontal flap seal under the vertical bulb creating the All-in-One seamless corner.

Due to a 0.08 inch gap, there is no need to lift the vertical bulb in order to fit the horizontal flap seal under the vertical bulb without lifting the vertical bulb. Therefore, slide the horizontal wipe seal under the vertical bulb without lifting the vertical bulb. Fasten the second section to the wall like the first section.

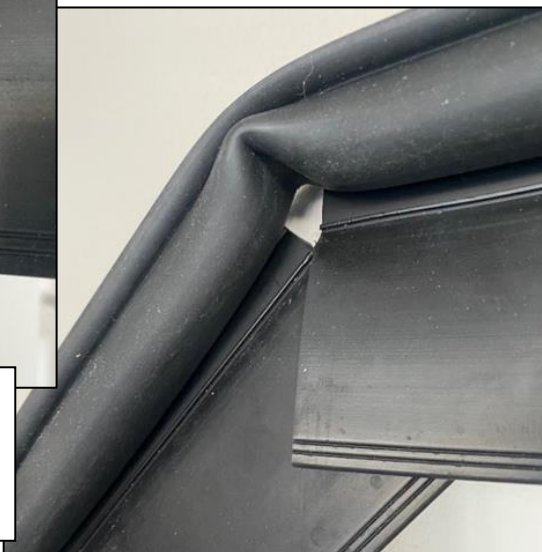


STEP 4



**Cut notch 1/2" past
room opening**

Make a 3/4" cut in the horizontal section exactly 1/2" past the second corner of the slide out opening to create a third section. This will allow the horizontal (second section) and vertical sections (first and third sections) of the patented All-In-One slide out seal design to fit properly and seamlessly on the sidewall.



Rotate the third section at top corner vertically (90 degrees) first, then finish by sliding the horizontal flap seal under the vertical bulb of the third section into the 0.08 inch gap without lifting the vertical bulb, then fastening the third section to the wall and completing the All-In-One seamless corner.